



ESBE System Units  
CIRCULATION UNIT DN25, DN32



Mtrl.nr: 98141083 • Ritn.nr: 7879 vers. B • Rev. 2021-10-21

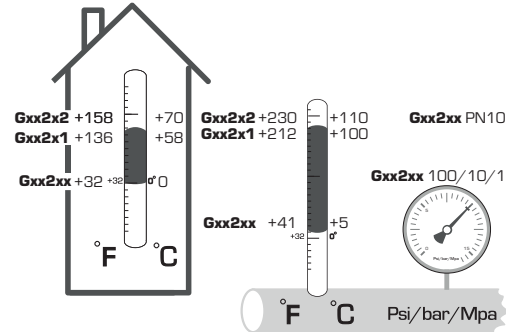


Series GDA200  
Series GRA200

Series GFC200  
Series GBA200

LVD 2014/35/EU  
EMC 2014/30/EU  
RoHS 2011/65/EU  
PED 2014/68/EU, article 4.3

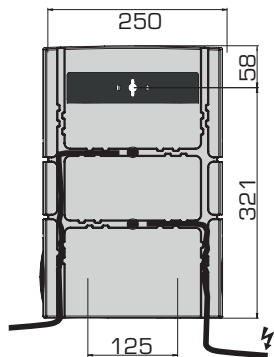
ErP 2009/125/EU  
ErP 2015  
EnEV 2014  
CE EAC UK CA



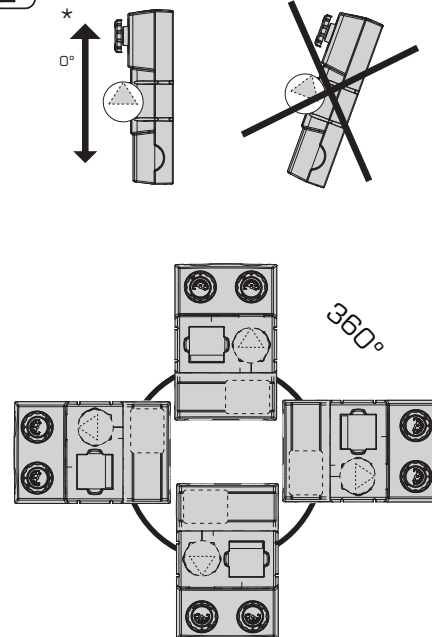
SERIES	FUNCTION
ESBE GDA211 GDA 212	
ESBE GFA211 GFA212	
GRA211 GRA212 GRA231 GRA232	
GRC221 GRC222 GRC241 GRC242	
ESBE GBA211	



**Cabling • Dimensions**

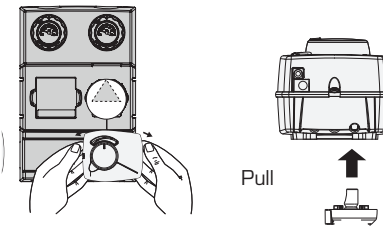


**Mounting position**

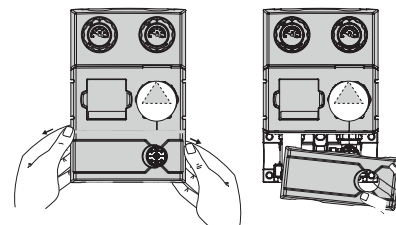


**Remove actuator**

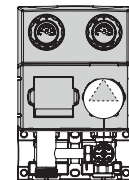
Series GRA2xx, GBA211, GRC2xx



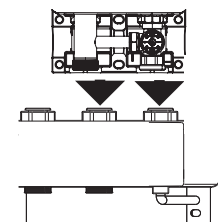
**Disassembly insulation**



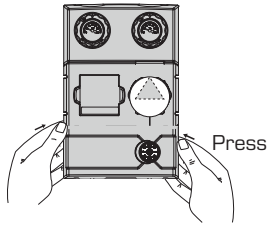
**Fit supply pipes**



**Assemble on manifold**

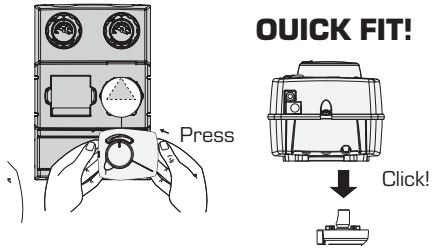


### 3 Assemble lower insulation

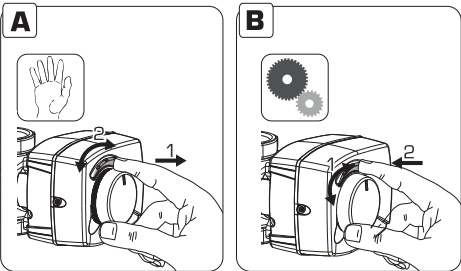


#### Assemble actuator

Series GRA2xx, GBA211, GRC2xx

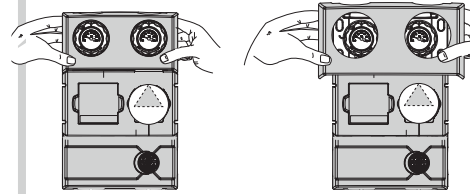


### i Commissioning actuator:

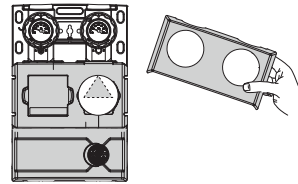


<https://esbe.eu/group/products/rotary-actuators>

### 4 Pull up insulation

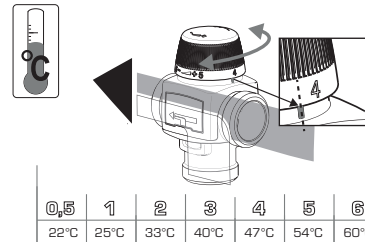


#### Remove



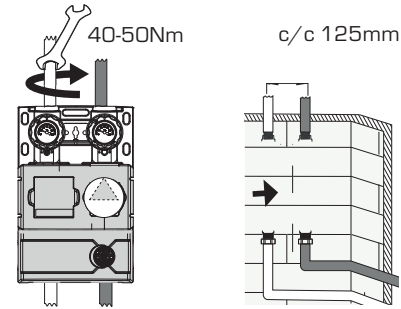
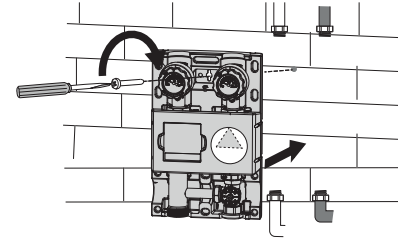
### i Commissioning fixed temperature

Series GFA211, GFA212

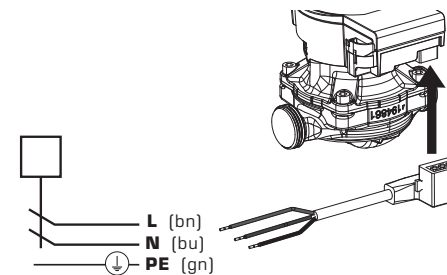
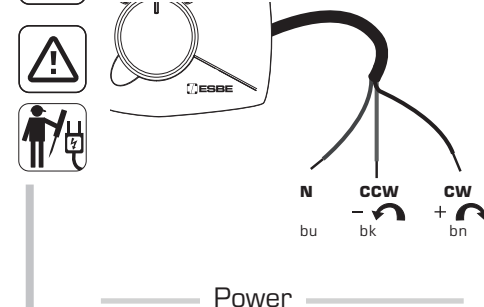


<https://esbe.eu/group/products/thermostatic-mixing-valves>

### 5 Assembling on wall without manifold

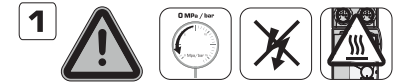


### i Electric installation

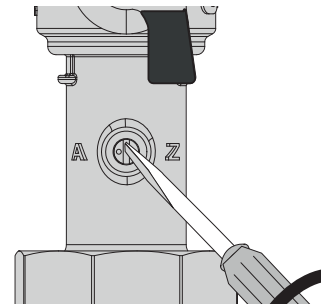
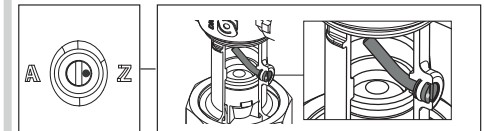


[www.esbe.eu](http://www.esbe.eu)

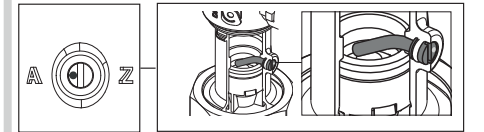
### i Commissioning



#### 1 Filling and venting

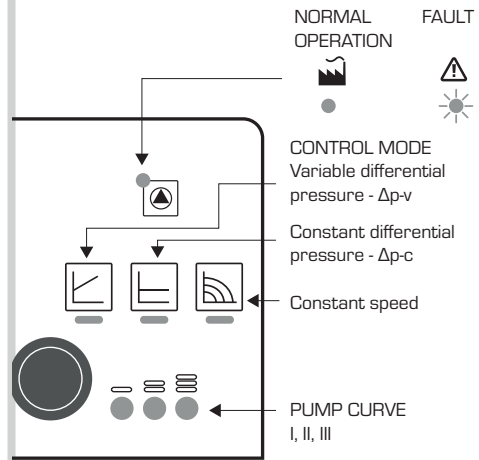


#### 2



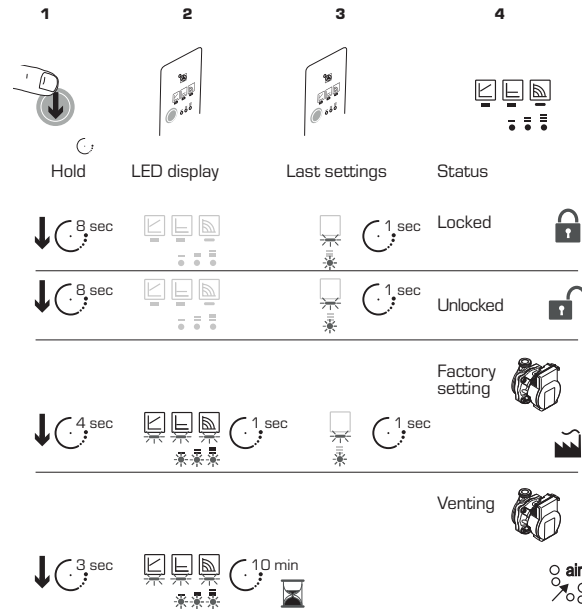


### Wilo Display

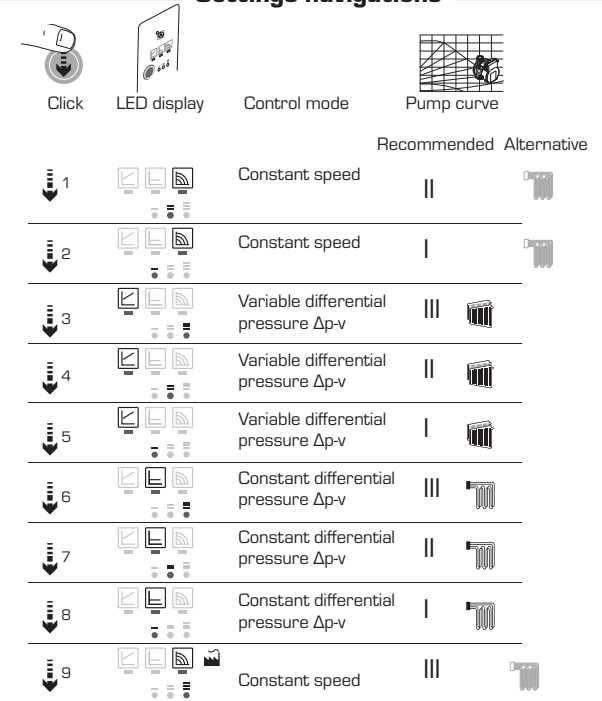


### 7

### Pump Settings

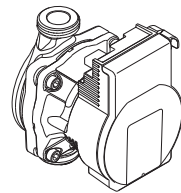


### Settings navigations



### WILO - Faults, Causes and Remedies

LED Indicator	Meaning	Diagnostic	Cause	Remedy
lights green	Pump in operation	Pump runs according its setting	Normal operation	
lights orange	Pump is in PWM mode	Pump is speed controlled by the PWM signal	Normal operation	
blinks red/green	Pump in function but stopped	Pump restarts by itself after the fault is disappeared	<b>1.</b> Undervoltage $U < 160 V$ or Overvoltage $U > 253 V$ <b>2.</b> Modul overheating: temperatur inside motor too high	<b>1.</b> Check voltage supply $195 V < U < 253 V$ <b>2.</b> Check water and ambient temperature
blinks red	Pump out of function	Pump stopped (blocked)	Pump does not restart by itself due to a permanent failure	Change pump
blinks orange	Pump out of function	Pump stopped	Pump is not starting	Change pump
LED off	No power supply	No voltage on electronics	<b>1.</b> Pump is not connected to power supply <b>2.</b> LED is damaged <b>3.</b> Electronics are damaged	<b>1.</b> Check cable connection to power supply <b>2.</b> Check if pump is running <b>3.</b> Change pump



<http://www.esbe.eu/global/en/products/circulation units>



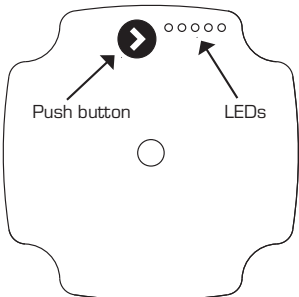
### Factory setting



= Factory settings



### Grundfos Display



[http://www.esbe.eu/global/en/products/circulation\\_units](http://www.esbe.eu/global/en/products/circulation_units)

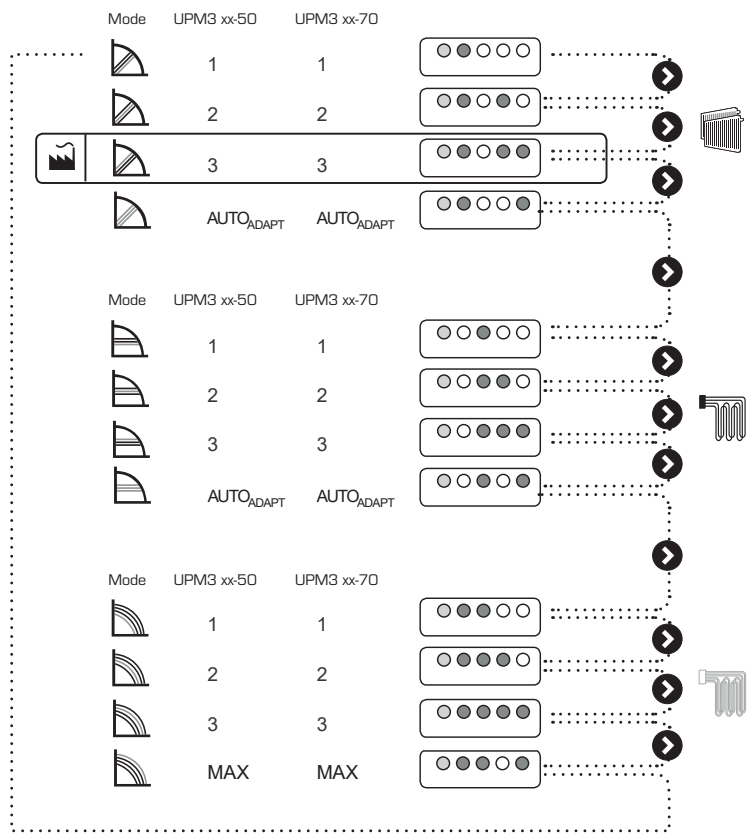
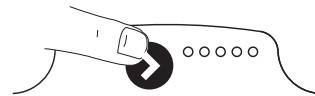


### Grundfos - Faults, Display and Solutions

FAULT	DISPLAY	SOLUTION
OFF 0 V	[Right arrow]	A. Check power supply B. 1/On C. Check PPM SYSTEM CONTROLLER
ON 230 V	RED YELLOW	1. 1/On 2. Check fan speed (No.2, 5 mm)
ON <160 V	RED YELLOW	Check wiring (L, PE, N)
ON 230 V	RED YELLOW	1. 1/On 2. Check fan speed 3. Check fan direction 4. Check fan speed (No.2)

### 7

### Settings navigation



### 8

### Expose application info using leaflet

