



- High efficiency - low temperature boiler range
- 6 sizes, 26 - 83 kW
- Boiler body of high quality perlitic cast iron
- Modern design
- 3-way flue gas pathes
- Solid thermal insulation
- High norm efficiency

The CTC Wirbex Ultra is a further development of the experienced CTC Wirbex boiler range.

The 3-way construction which minimize the emissions, hazardous to the environment, and the special arrangement of the heat transmitting ribs guarantees a high norm efficiency.

Special characteristics are the high average lifetime thanks to the thermochock absorbtion ability of the perlitic cast iron and the corrosion resistance of the heat surfaces.

The unaffected elegance of the suitable casing and the nice cover of the instrument panel make the CTC Wirbex Ultra to a maintained ornament in every boiler room.

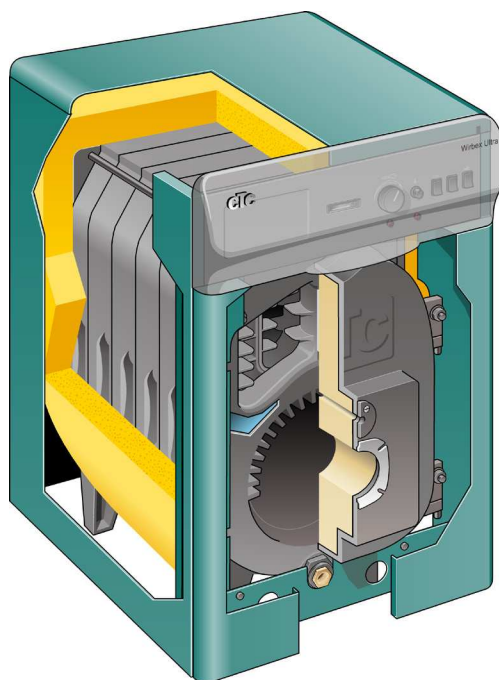
Technical Data

CTC Wirbex Ultra		30	40	50	60	70	80
Output	kW	26	37	49	60	72	83
Input	kW	28,9	41,1	54,2	66,4	79,6	91,6
Flue gas mass flow	kg/h	41,8	59,4	76,9	94,9	112,6	130,1
Resistance on flue gas side	mbar	0,06	0,15	0,24	0,32	0,38	0,43
Flue gas pipe	ø mm	130	130	130	150	150	150
Water content	L	14,5	17,7	20,9	24,1	27,3	30,5
Resistance upstream side $\Delta t=15K$	mbar	6	9	14	22	33	48
Heating flow	G	1 1/4"	1 1/4"	1 1/4"	1 1/4"	1 1/4"	1 1/4"
Heating return	G	1 1/4"	1 1/4"	1 1/4"	1 1/4"	1 1/4"	1 1/4"
Width	mm	600	600	600	600	600	600
Depth	mm	500	500	665	665	830	830
Hight	mm	920	920	920	920	920	920
Weight	Kg	146	172	201	227	256	282

CTC Wirbex Ultra

Modern, cost effective heat system in an elegant shape:

- optimized combustion chamber
- hinged cover
- 3-way boiler with the lowest emission and flue gas losses
- experienced CTC reliability which will be profitable



Subject to alterations in design.



P.O. Box 309, S-341 26 Ljungby, Sweden
 Tel + 46 372 880 00 Fax +46 372 824 94
www.ctc-heating.com